

CLIMATE CHANGE


Ruth Evans & Briar Belgrave

Associates, Barkers & Associates

NZPI 2021
CONFERENCE

VALUES VOICES VISION

Nelson, 24-26 March

PLATINUM SPONSOR 



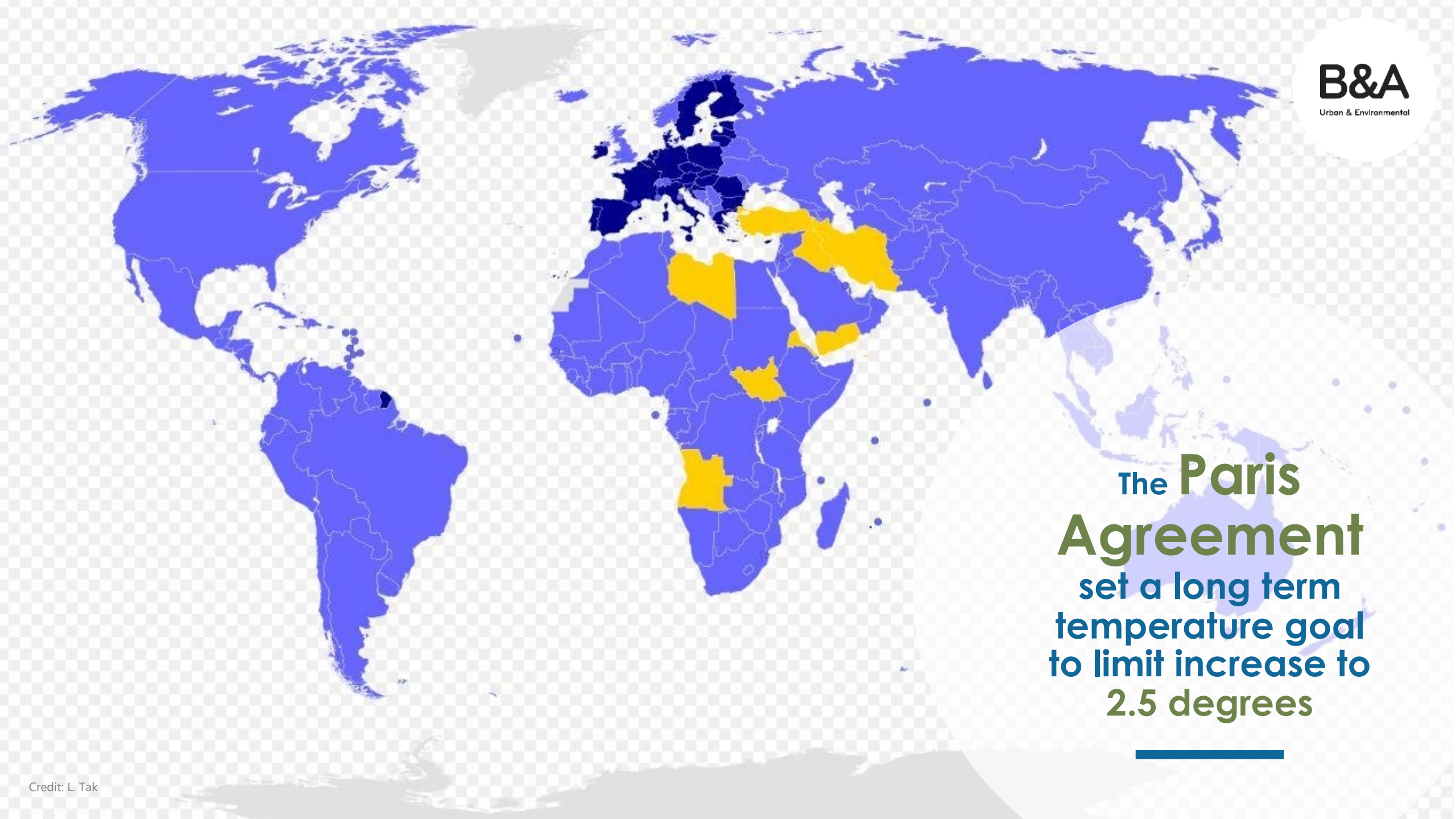
CLIMATE CHANGE

RMA Plans – Taking Action

NZPI Conference March 2021

NETFLIX

Netflix binge
watching is just as
bad as travel in
terms of carbon
emissions

A world map with a light blue background. The landmasses are outlined in white. Several countries are highlighted in a darker blue color. These include the United Kingdom, France, Germany, Italy, Spain, Portugal, Greece, Turkey, Egypt, Jordan, Saudi Arabia, Iraq, Iran, Afghanistan, Pakistan, India, China, and the United States. The rest of the world's landmasses are in a lighter blue color.

The **Paris Agreement** set a long term temperature goal to limit increase to **2.5 degrees**



Legislative Context & Direction

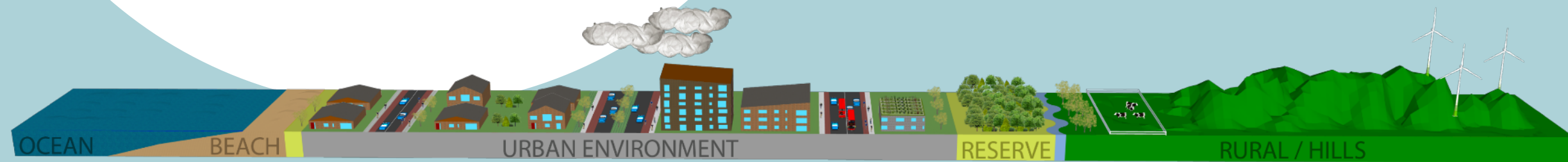
RMA

Resource management reform:
NBEA, SPA, CCAA

Climate Change Response (Zero
Carbon) Amendment Act 2019

Other legislation

Opportunities for RMA planning documents (future NPS, NES, RPS, regional and district plans) to address **climate change challenges and natural hazards**





Singapore

20 minute towns

45 minute cities

Cap on private car and
motorcycle growth

Preference for walk-cycle-ride

B&A

Urban & Environmental

Australia

Queensland

Planning Act 2016

State Planning Policy

Climate change mitigation and
adaptation imbedded throughout



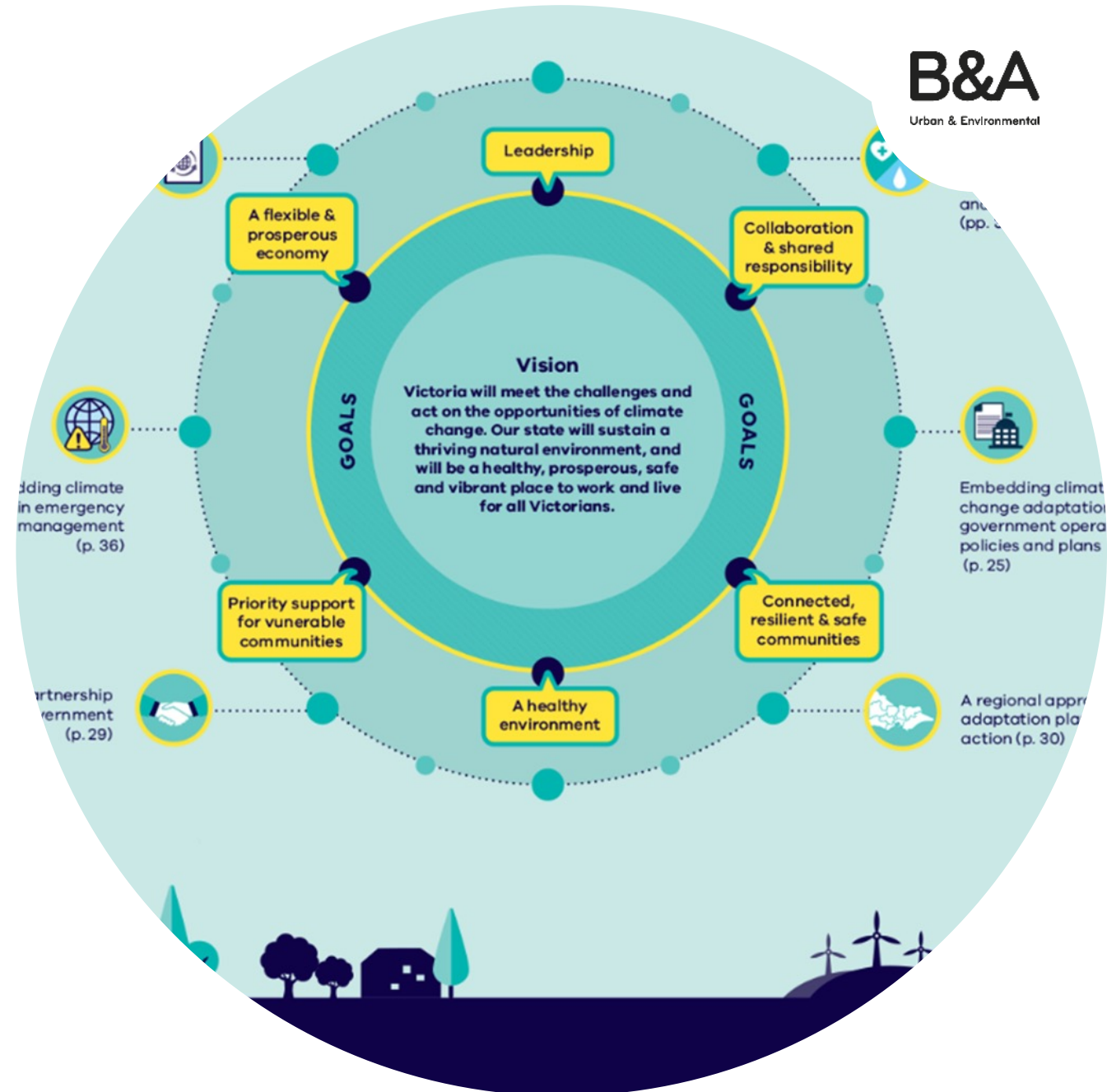
Victoria

Climate Change Act 2017

Climate Change Framework

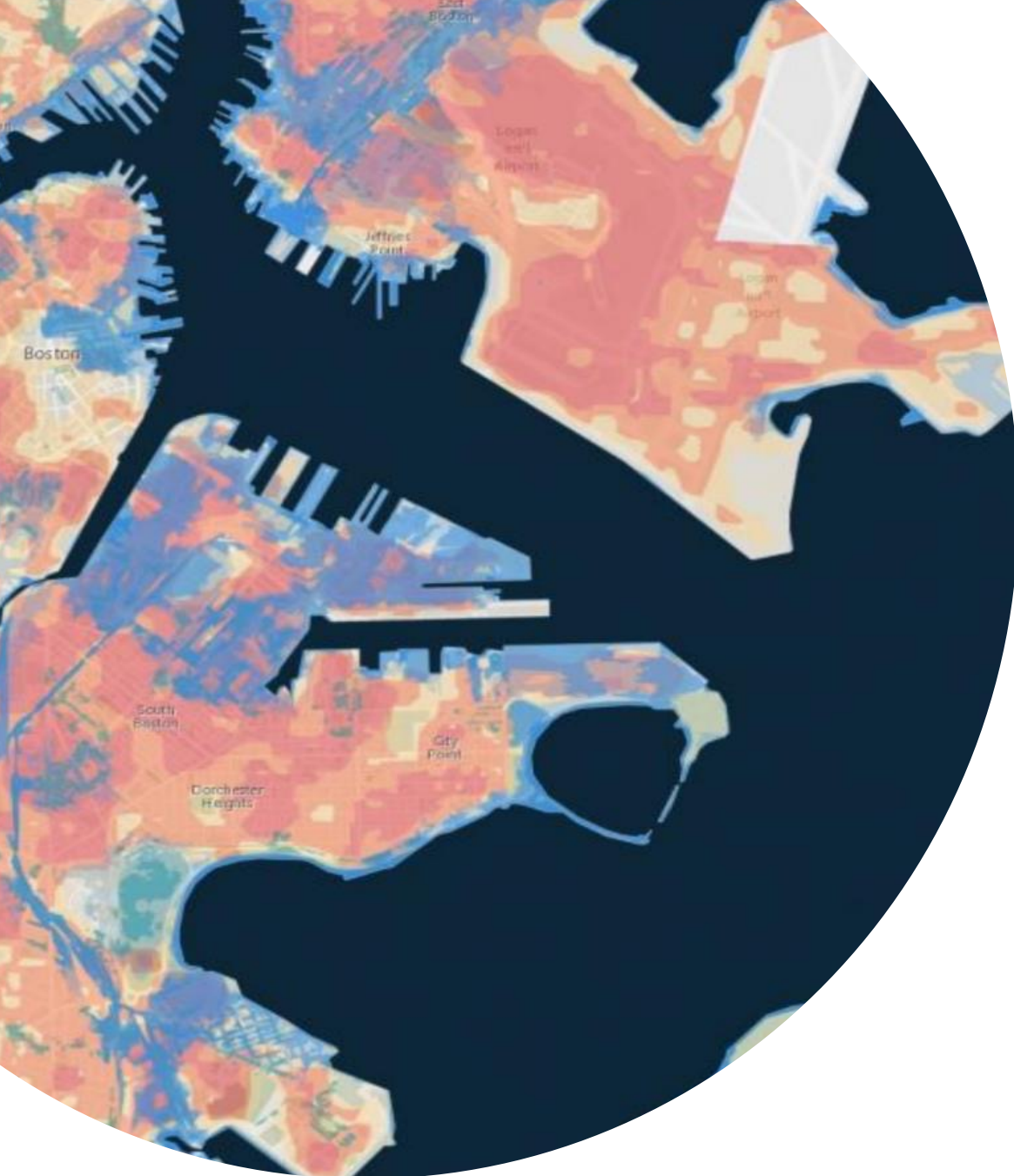
Climate Change Adaptation Plan
2017 – 2020

Victorian Planning Provisions





Boston



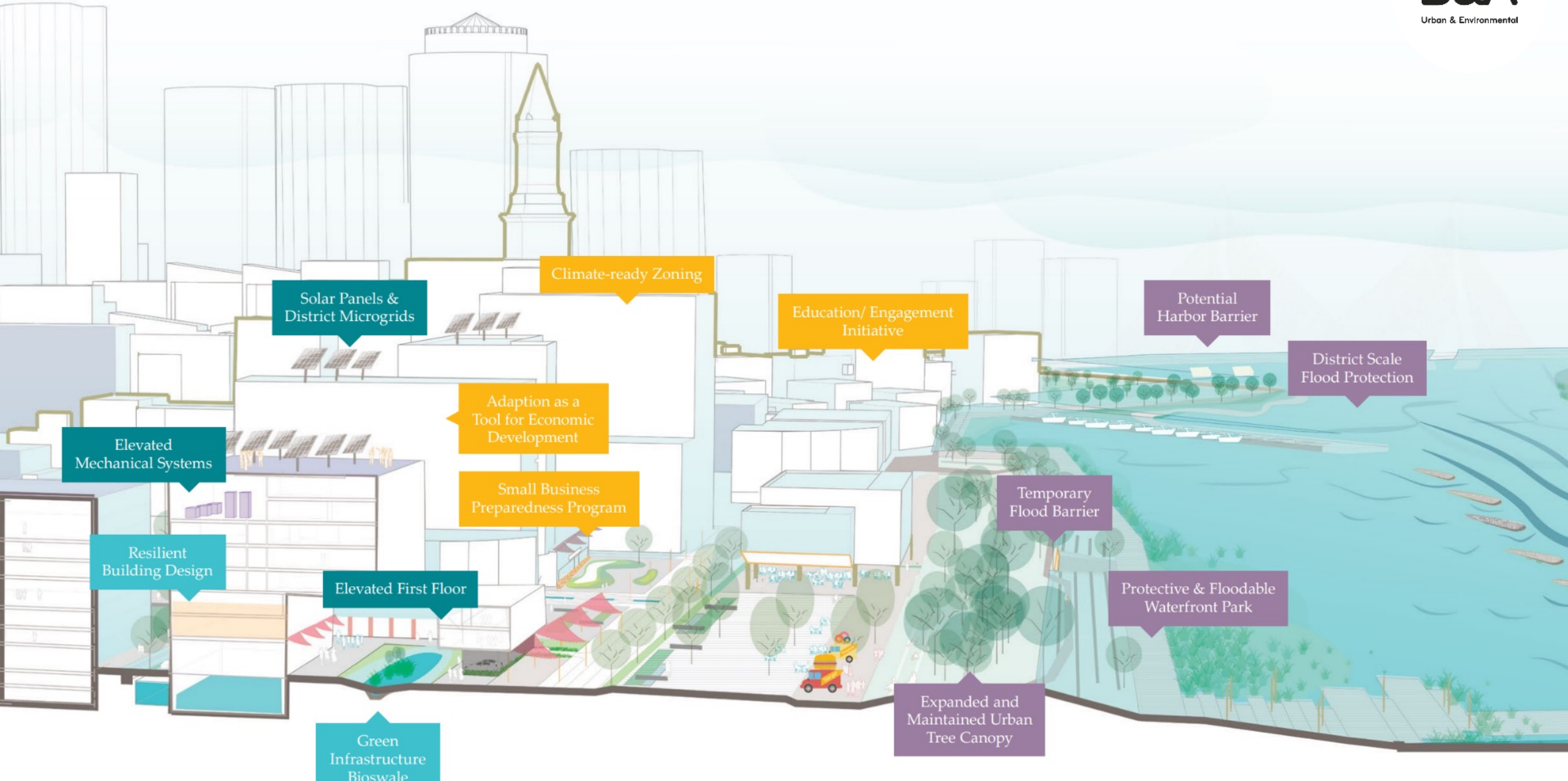
Climate Ready Boston

Update climate projects

Address where the City is vulnerable to climate change

Set a plan for making the city more resilient

ADAPTING TO CLIMATE CHANGE



Solar Panels & District Microgrids

Climate-ready Zoning

Education/ Engagement Initiative

Potential Harbor Barrier

District Scale Flood Protection

Elevated Mechanical Systems

Adaption as a Tool for Economic Development

Small Business Preparedness Program

Temporary Flood Barrier

Resilient Building Design

Elevated First Floor

Protective & Floodable Waterfront Park

Green Infrastructure Bioswale

Expanded and Maintained Urban Tree Canopy



New Zealand RMA Plans

Recent proposed district plans

Reference to climate change becoming more common

Some have specific climate change chapters or provisions

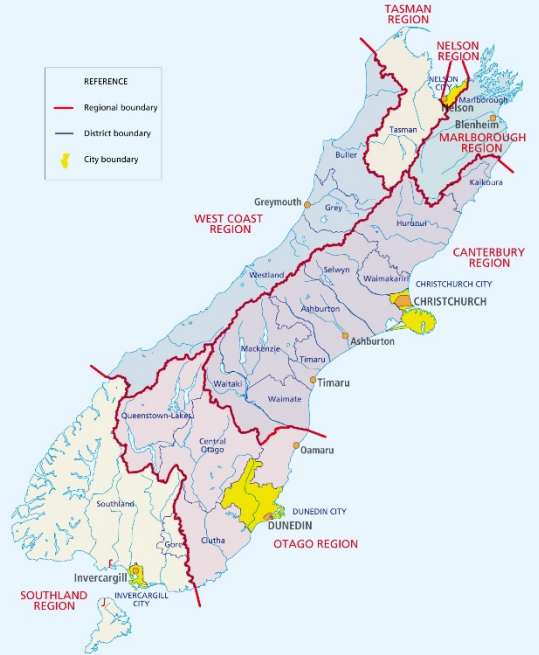
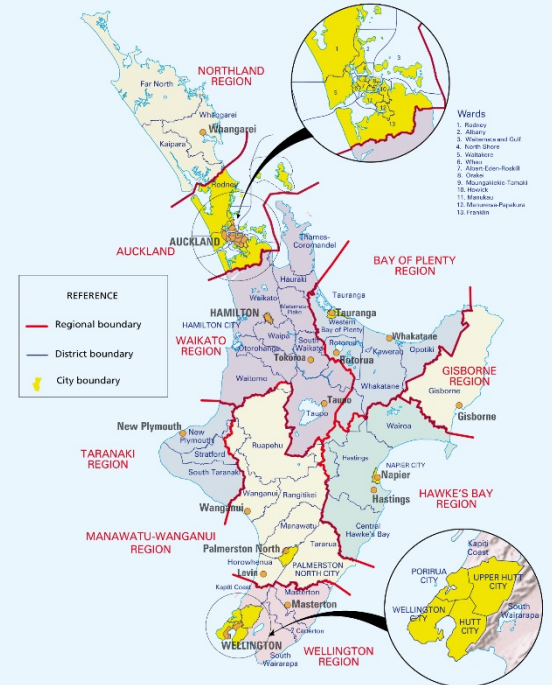


Recent proposed district plans

Adapt to projected effects of climate change

Development to prioritise lower greenhouse gas emissions

Energy consumption and emission reductions; modal shift; resilience



National Direction

Climate
change?



NPS

Spatial plan/
Vulnerability
mapping

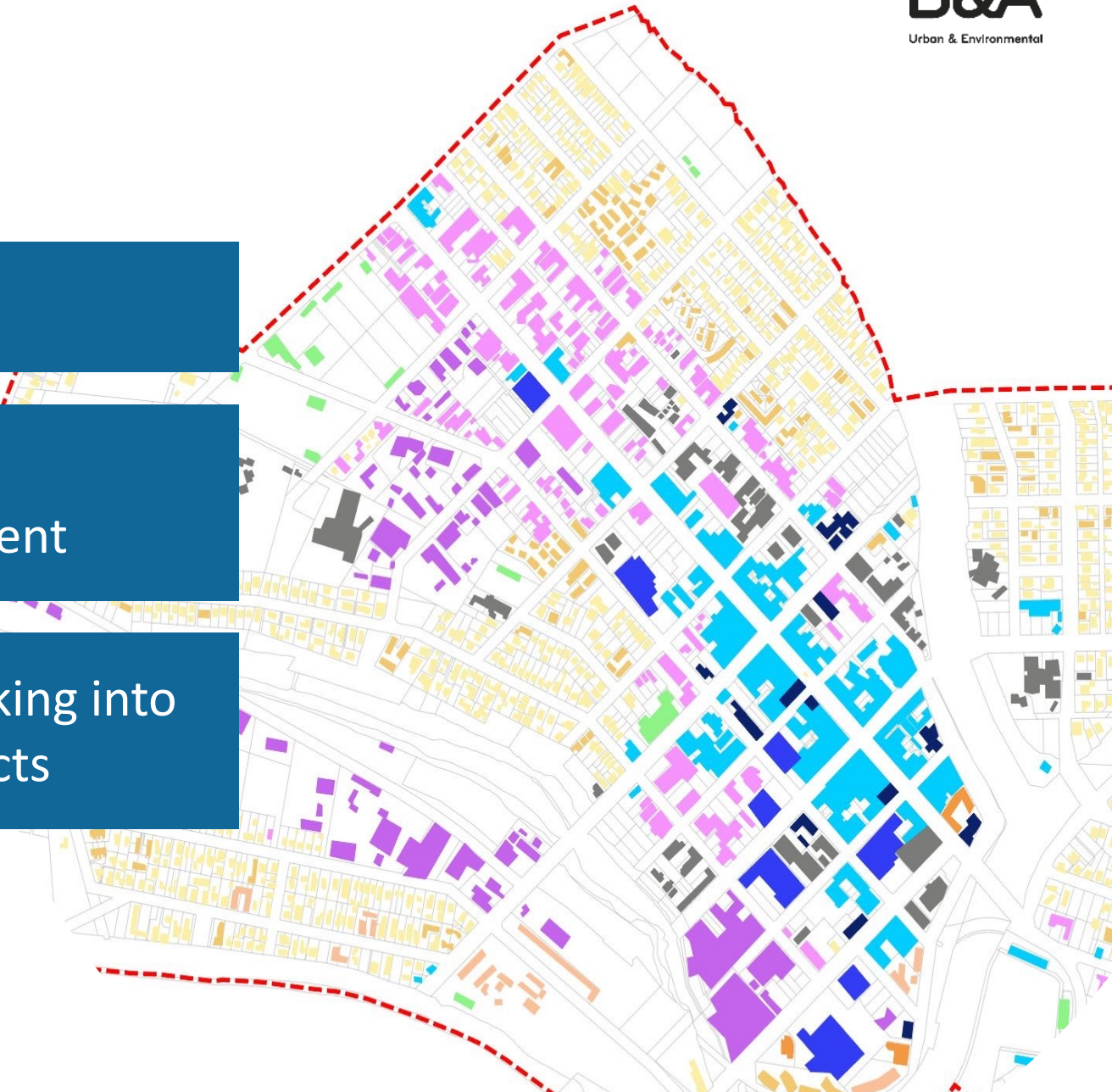
National
Planning
Standards

Spatial Plans

Imbed climate change throughout

Vulnerability mapping
- National climate change risk assessment

Where and how does growth occur, taking into account projected climate change effects



Regional Policy Statements

Community awareness/understanding of climate change and short, medium, long term effects. Take lead on identifying all areas affected

Be informed by spatial plan / vulnerability mapping and assessment

Policy direction that RMA plans address climate change (beyond just effect on natural hazards)

Respond to any future NPS-NH and NPS-CC

Regional and District Plans

Assess climate change impacts on a proposal

+

Assess proposal impacts on climate change

+

How a proposal can mitigate climate change effects in itself

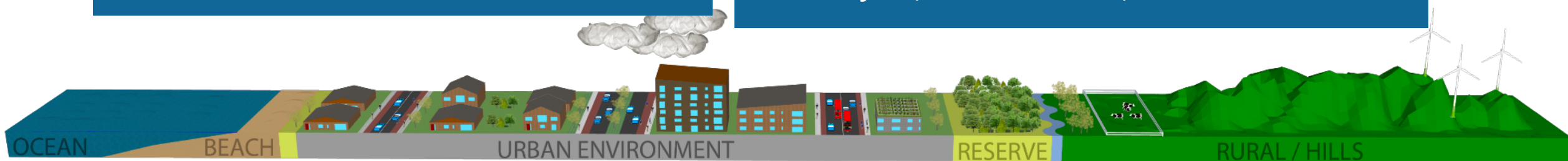
Climate change resilience and carbon zero objectives expressed at a local level

Enabling provisions

'Climate ready' zoning/overlays

Climate responsive design

Council fees, DCs incentives, rates



RMA plans have
important role
in NZ's **climate**
change
response

Broader
than just
natural
hazards

Understand
climate change
vulnerability
at a **local level**

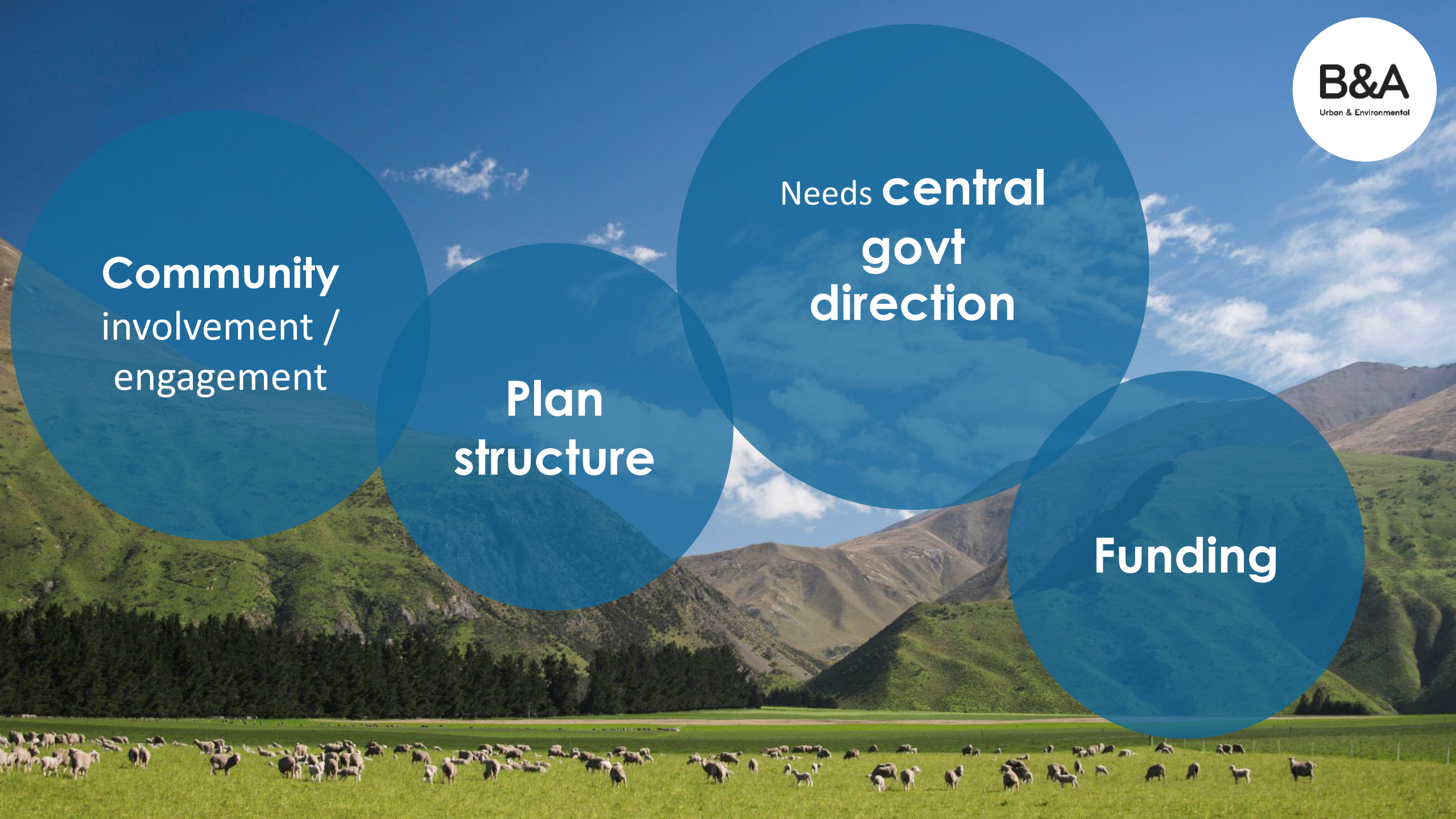
Spatial
plans

**Community
involvement /
engagement**

**Plan
structure**

Needs **central
govt
direction**

Funding



Luck is not
a policy we
can count on

